

Table 1
Wind Erosion by State, 1939

State	Total Acres Surveyed ¹	Acres with Serious Erosion ²	Acres with Severe Erosion ³
Colorado	66,401,445	28,015,000	15,652,000
Kansas	52,520,949	24,383,000	13,425,000
Montana	93,523,840	59,604,000	4,446,000
Nebraska	49,291,829	13,865,000	7,536,000
New Mexico	77,588,536	37,785,000	28,264,000
North Dakota	44,948,773	573,000	9,109,000
Oklahoma	44,586,881	9,213,000	26,111,000
South Dakota	49,011,262	8,084,000	4,046,000
Texas	169,326,465	80,165,000	23,327,000

¹ 1934 Soil Reconnaissance Erosion Survey, U.S. Soil Erosion Service.

² Land eroded sufficiently to require control methods to insure continued productivity.

³ Land eroded to the point where further use for crops or livestock is economically unfeasible.

Source: Memorandum from H.H. Bennett, Chief, Soil Conservation Service, December 14, 1939, National Archives, Record Group 114, MLR Entry 1, Box 1.

Table 2
Average Farm Size in the Great Plains
1880-1982

Year	Mean Farm Size	Percent of Farms < 500 acres	Number of Farms	Year	Mean Farm Size	Percent of Farms < 500 acres	Number of Farms
1880	186	99	44,278	1950	1,055	53	160,824
1890	226	96	102,353	1954	1,145	50	151,654
1900	431	84	107,483	1959	1,303	45	134,073
1910	398	82	201,227	1964	1,477	42	120,859
1920	557	71	223,782	1969	1,500	42	116,844
1925	541	70	217,589	1974	1,596	41	109,299
1930	636	64	220,002	1978	1,630	40	105,814
1935	642	65	227,810	1982	1,665	41	101,262
1940	779	60	191,097	1987	1,648	43	103,705
1945	972	53	170,901				

Source: U.S. Agricultural Census. Great Plains states include eastern Montana and Colorado counties, western counties of the Dakotas, Nebraska and Kansas.

Table 3
A. Ratio of Tilled and Untilled Land by Farm Size in Southwestern North Dakota, 1936

Farm Size (Acres)	2051 and over	1041 to 2050	881 to 1040	721 to 880	561 to 720	401 to 560	241 to 400	240 and Less
Approximate Farm Size	3000	1545	960	800	640	480	320	120
Ratio Tilled to Untilled Acreage	0.52	0.63	0.94	1.06	1.14	1.03	0.99	2.18
Ratio of Cultivated to Farm Size	.29	.35	.50	.52	.54	.52	.53	1.00

Source: 1936 U.S. Resettlement Administration, Sample Surveys of Farms, USDA National Agricultural Library.

B. Ratio of Cultivated to Farm Size in Three Western South Dakota Counties, 1937

Farm Size Group (Acres)	5,281 +	2,881-5,280	1,881-2,880	1,041-1,880	881-1,040	721-880	561-720	401-560	241-400	0-240
Average Farm Size	12,594	3,890	2,322	1,444	949	812	649	485	324	162
Ratio of Cultivated Acres to Farm Size	.01	.07	.11	.25	.18	.26	.35	.32	.46	.43

Mead, Perkins, and Zieback Counties, South Dakota, "Farm Size as a Guide to Planning in the Tri-County Soil Conservation District," 1940 compiled from Agricultural Conservation Program Records, 1937, USDA National Agricultural Library.

Table 4
The Relationship between Farm Size and Fallow
Western Kansas Counties

Dependent Variable:		Fallow Acres per Farm	
Variable	Coefficient Estimates and t-ratios in		
	1930		
Constant	-45.98	-1.44	
Average Farm Size	00.19	1.77**	
Average Farm Size ²	-00.51E-04	-0.52	
Average Pasture	-00.09	-1.86**	
Adjusted R-squared	.27		
		Coefficient Estimates in 1954	
Constant	-53.66	-1.20	
Average Farm Size	00.26	2.62*	
Average Farm Size ²	00.83 E-04	1.86**	
Average Pasture	-00.34	-7.02*	
Adjusted R-squared	.86		

* Significant at 1 percent level, ** at the 10 percent level

Table 5
Descriptive Statistics for Dust Bowl Counties
and the Rest of the Great Plains, 1930

	Percent of Land In Crops	Percent of Land in Pasture	Average Farm Size
Great Plains Counties	39%	57%	641 acres
Dust Bowl Counties	42	55	665
Dust Bowl Counties (without Texas and New Mexico)	52	46	603

1930 Census data

Table 6
Soil Conservation Districts, Selected Great Plains States

Year	State	Date Law Passed	Number of Districts	Area Covered (Acres)
	Colorado	5/6/1937		
1938			3	1,510,782
1940			17	3,850,233
1945			57	17,540,824
1950			91	32,100,919
	Kansas	4/2/1937		
1938			1	411,520
1940			12	4,959,846
1945			57	27,719,039
1950			103	51,991,680
	Montana	2/28/1939		
1938			0	0
1940			3	987,240
1945			49	31,421,469
1950			77	75,974,385
	Nebraska	5/18/1937		
1938			2	147,964
1940			20	2,317,721
1945			61	25,464,932
1950			87	48,250,339
	North Dakota	3/16/1937		
1938			5	1,746,880
1940			11	5,635,557
1945			41	18,412,188
1950			78	41,949,492
	Oklahoma	4/15/1937		
1938			24	13,649,749
1940			43	21,342,159
1945			71	38,335,000
1950			82	43,290,200
	South Dakota	3/5/1937		
1938			4	780,479
1940			12	2,582,228
1945			37	14,752,399
1950			50	24,759,756

Source: Soil Conservation District Records, National Archives, Record Group 114, MLR Entry 1172, Box 1.

Table 7

Soil Conservation District	Average Size of Petitioners (Acres)	Average Farm Size in County (Acres)
Fallon County SCD	2,889	1,511 (1940)
Cascade County SCD	1,452	1,241 (1945)
Powder River SCD	3,533	3,381 (1950)

Source: SCD petitioners, Farm Service Administration Files, Helena, Montana. Census data: Fallon County, 1940, <http://fisher.lib.virginia.edu/census/>, Cascade and Powder River Counties, 1945 and 1950, U.S. Census of Agriculture, 1950, Counties and State Economic Areas—Montana, Vol. 1, Pt. 27, 40-44.

Table 8
Size of Soil Conservation Districts in Kansas, 1941

District Name	Size (Acres)
Labette County	441,520
Lyon County	546,066
Osage County	408,660
Pawnee County	474,840
Wilson County	371,840
Coffey County	412,160
Brown County	356,440
Allen County	325,120
Geary County	249,600
Morris County	445,440
Grant County	369,920
Marshall County	579,200

Source: Soil Conservation District Records, National Archives, Record Group 114, MLR Entry 1001, Box 12

Table 9
Size Additions to Soil Conservation Districts, Selected Great Plains States, by 1944

	Kansas	Montana	Nebraska	North Dakota	South Dakota
Original Acreage	13,462,099	11,394,882	10,608,220	10,672,551	6,192,448
Additional Acreage	50,860	3,106,064	7,252,807	2,381,892	3,195,263

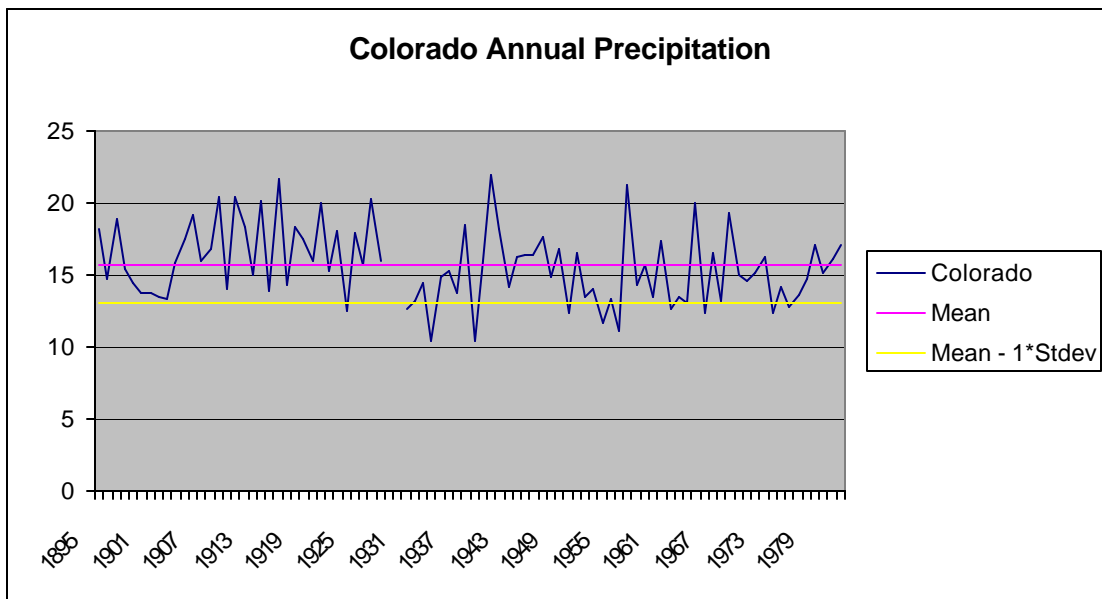
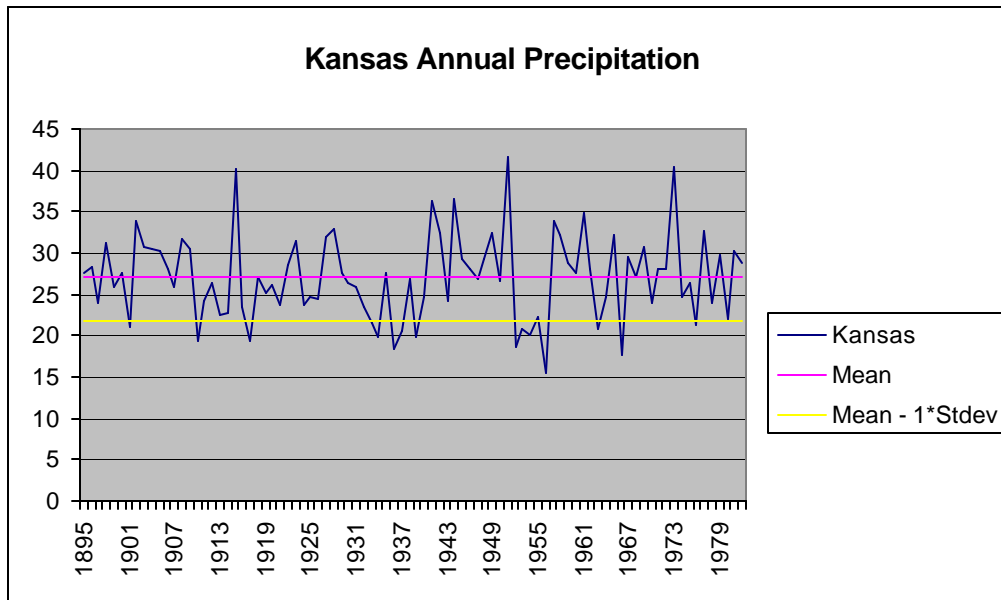
Source: Soil Conservation District Records, National Archives, Record Group 114, MLR 1001, Box 5.

Table 10
Farm Size Adjustment on the Great Plains, 1920-1982
Montana and Colorado

1920		
Number of Farms	Montana	Colorado
Less than 100 acres	4,350	15,294
100-499 acres	35,723	33,750
500-999 acres	11,982	7,482
Over 1,000 acres	5,622	3,408
Total	57,677	59,934
Mean Farm Size	608 acres	408 acres
St. Deviation	1,402	1,119
C.V.	2.30	2.74
1982		
Number of Farms		
Less than 100 acres	5,593	9,252
100-499 acres	4,808	7,761
500-999 acres	2,640	3,337
Over 1,000 acres	10,529	6,761
Total	23,570	27,111
Mean Farm Size	2,568 acres	1,237 acres
St. Deviation	2,359	2,071
C.V.	.92	1.67

Source: U.S. Census

Figure 1
Annual Precipitation in the Great Plains States of Kansas, Colorado, and Montana
1895-1985



Montana Annual Precipitation

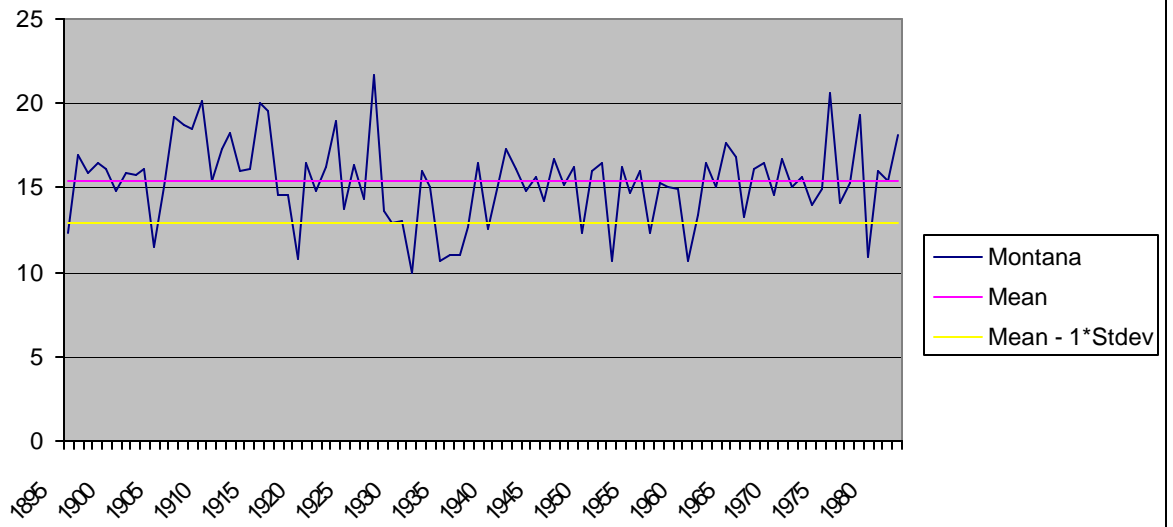


Figure 2
The Great Plains



Figure 3
Wind Erosion in the Great Plains in the 1930s

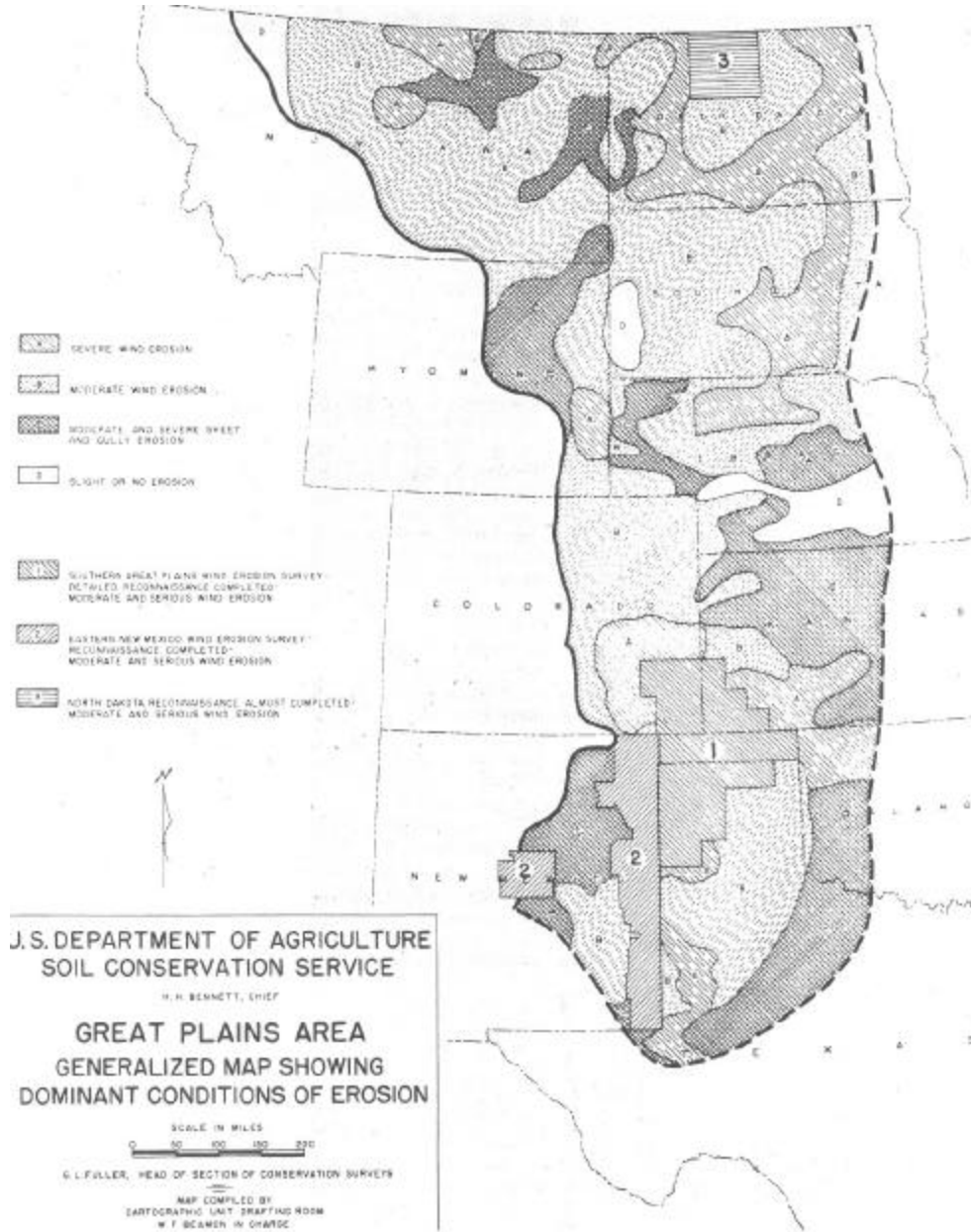
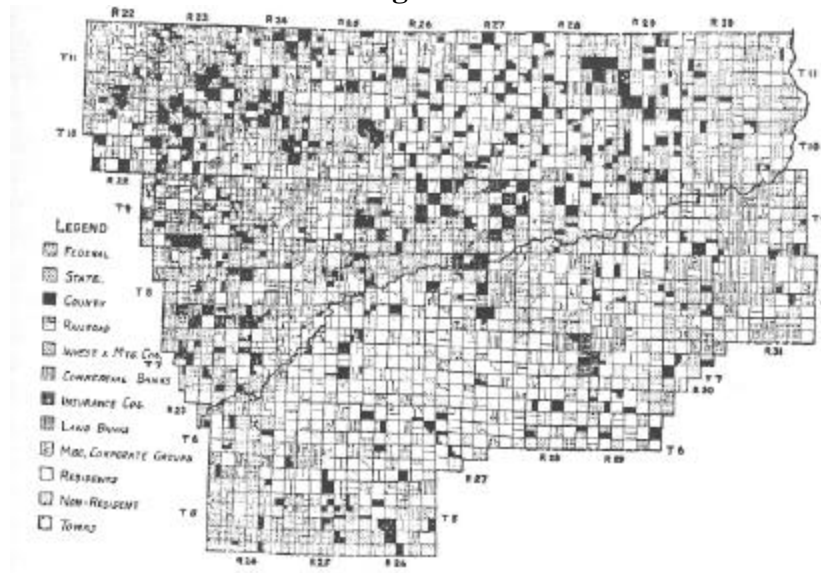


Figure 4



Source: Renne (1935, 424).

Figure 5
SCS Demonstration Projects in the Great Plains



Figure 6

